



MACHINE-ROOM-LESS FREIGHT ELEVATOR



To move freight, you need an elevator that's built for freight

To move freight, you need an elevator that is designed specifically for moving freight. That means a powerful hoisting machine. Durability to cope with rough treatment. A smooth ride to handle fragile loads. Leveling accuracy for easy loading and unloading. Wide doors that maximize the usage of space in the car.

The powerful and high-performance KONE TranSys™ freight elevator solution is ideal for a multitude of demanding vertical freight transportation tasks in a variety of buildings: supermarkets, shopping malls, airports, warehouses, hospitals, hotels, industrial plants and offices.

The new KONE TranSys™ freight elevator brings all of the advantages of machine-room-less elevator technology to the higher range of freight elevators.



The power to lift up to 4000kg at 0.5m/s
The KONE TranSys™ freight elevator solution is based on the KONE MonoSpace® platform. It incorporates the highly reliable and eco-efficient KONE EcoDisc® hoisting machine for exceptional power and performance. Moving upto 4000kgs at 0.5m/s is no problem for this workhorse. This powerful machine also reduces power consumption, compared with conventional machines.





Outstanding power and performance

Exceptionally space-efficient

The KONE TranSys™ freight elevator needs no machine-room at all. This means:

- Easier positioning of the elevator in the building
- Saves building construction time and costs
- Up to 30 cubic meter extra building space that can be used more profitably.
- More efficient, safer elevator installation processes

Reliable, high performance

The KONE TranSys™ freight elevator solution provides reliable operation, outstanding traffic performance and a smooth ride. The ride quality is a result of KONE's EcoDisc® coupled with V3F. The variable frequency drive prevents current peaks and ensures excellent stopping accuracy, making it easier and safer to load and unload.

Eco - Efficient

The low friction, gearless construction of the KONE EcoDisc® hoist reduces wear, so it increases the reliability and durability of the machine. KONE EcoDisc® is also compact and eco-efficient – it consumes half as much electricity as a conventional machine. KONE EcoDisc® requires no oil, which reduces fire risk and environmental impact

Easy loading and unloading

Powered by the gearless KONE EcoDisc® machine, the KONE TranSys™ freight elevator solution features quiet operation, smooth running to protect fragile loads and ± 5 mm leveling accuracy to make loading and unloading easier.

Wide load range

The KONE TranSys™ freight elevator solution is available in different car sizes to transport freight of various sizes and loads. With a maximum load capacity of upto 4000kg, it can meet virtually every freight transportation requirement in a variety of building types.

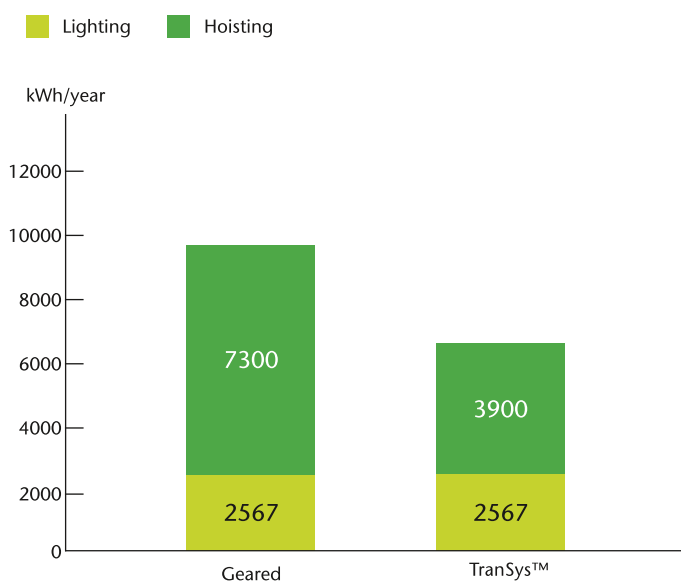
Customized specification

KONE TranSys™ are built for the job, the elevators are equipped with strong double skin door panels which retract fully for the easy movement of passengers and goods. Further door area protection includes a curtain of light for safe entry and exit. The car is finished in stainless steel or painted steel protected by buffer rails and equipped with LED or fluorescent lighting. A minimum floor-to-floor distance of 550mm is required to suit the through type application.

Max capacity	up to 4000 Kg
Max Travel	up to 12 floors and 40 M travel
Max Speed	0.5m/s
Control	Down collective and Full collective
Group size	Duplex
Clear opening in mm	up to 1800
Door height in mm	2000,2100,2200,2400
Car height in mm	2200,2300,2400,2700
Roping	4:1

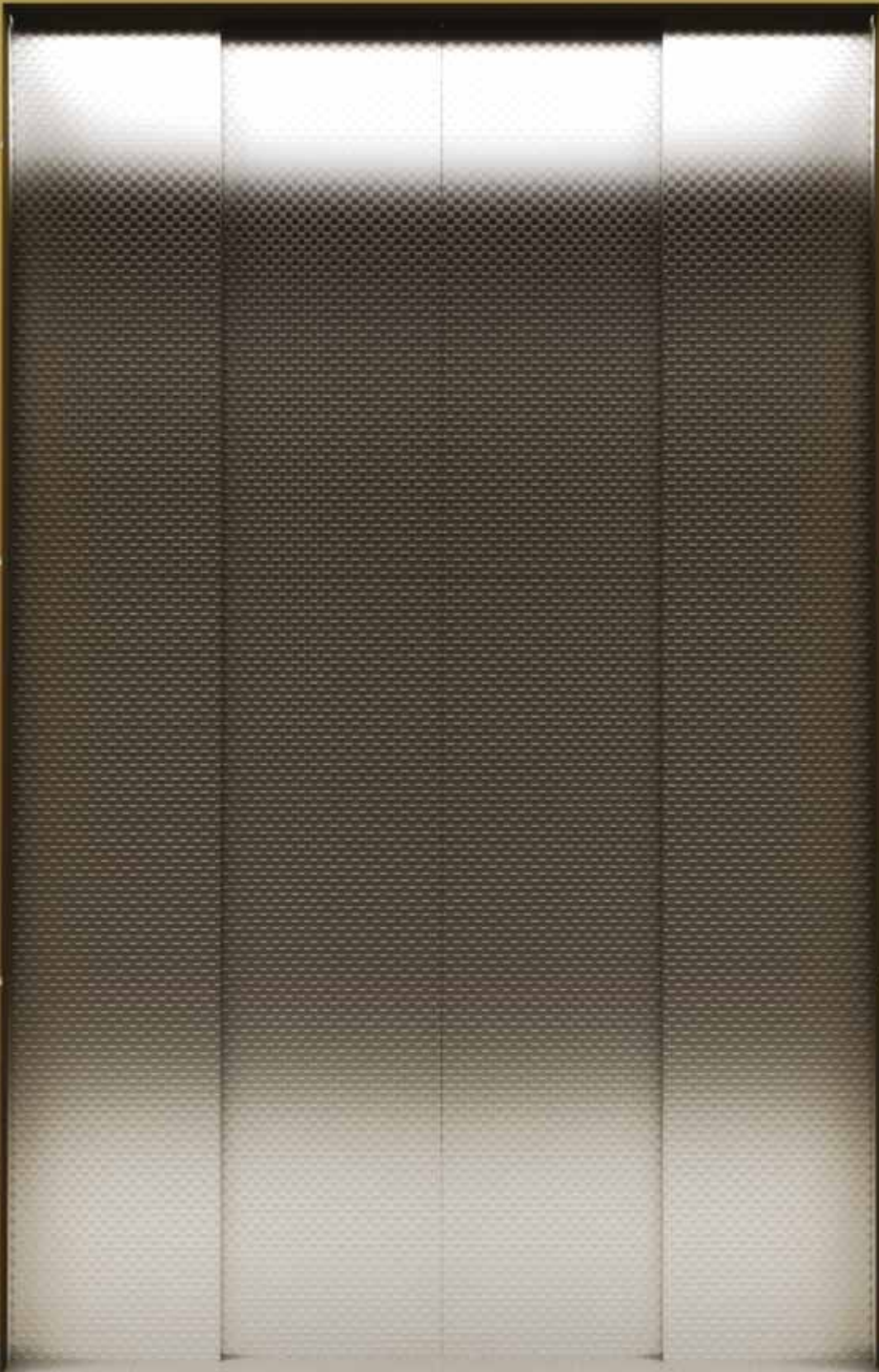
The perfect blend of eco-efficiency & performance

KONE is the Pioneer of Eco-efficiency in the elevator industry. The elevators are equipped with energy efficient KONE EcoDisc® hoisting machines which help to significantly reduce the energy consumption of a building. The EcoDisc® now powers KONE TranSys™ too!. This means a savings in power of up to 50% compared to conventional machines.



The basis of the calculation is from a 2000 Kg lift with 4:1 roping running at 0.5m/s speed and serving 12 stops at approximately 100,000 starts/year

5





A wide choice of durable interior materials

Ceilings



CT002
 Finishes : Painted; Stainless Steel
 Lighting: CFL; LED
 Ventilation: Axial Flow fan (strong air flow)



CT004
 Finishes : Painted; Stainless Steel
 Lighting: CFL; LED
 Ventilation: Cross Flow fan (mild air flow)

Walls

Stainless Steel



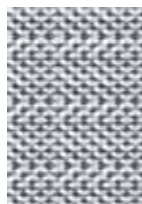
SS Hairline



Quadcheck

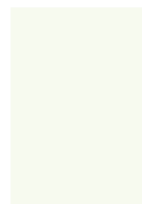


Canvas



Vandalproof

Painted Steel

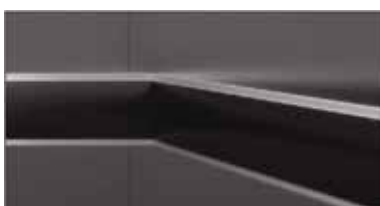


Casablanca White



Silver Grey

Buffer rail



Rubber

Floors

Chequered Plate



Steel
 Tear plate 6 mm



Aluminium
 Tear plate 2 mm



Stainless Steel
 Tear plate 2 mm

Stone



Jet Black Granite
 (JBG)

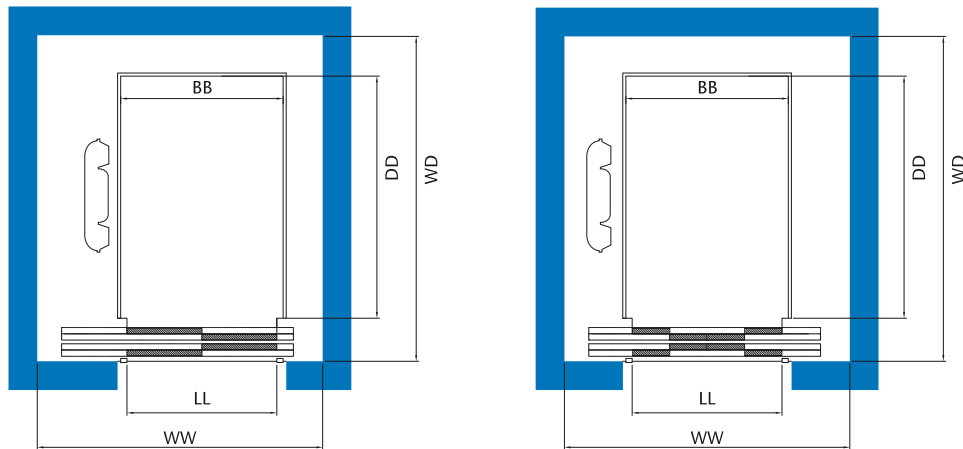
PVC



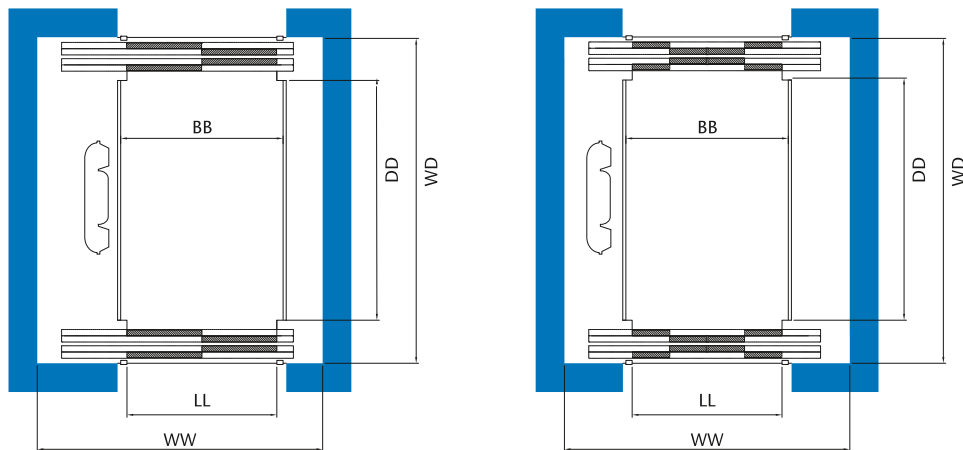
Dark Grey
 Marble Pattern (PDGM)

Car and shaft dimensions

LAYOUT FOR SINGLE ENTRANCE



LAYOUT FOR THROUGH TYPE CAR



Note:

For Through type car (TTC) Shaft size and Headroom height, pit height dimensions please contact our sales person

MINIMUM & MAXIMUM VALUES FOR SHAFT SIZE (Single entrance car)

Lift type	Rated load (Kg)	Rated Speed (m/s)	Car internal dimensions (mm)		Door opening (mm)	Hoistway internal dimensions Side opening door (mm)			Hoistway internal dimensions Centre opening 4 panel door (mm)			Headroom height SH (mm)	Pit depth PH (mm)
			BB	DD		LL	WW		WD	WW			
					Min		Max	Min	Min	Max	Min		
GW10	1000	0.5	1400	1800	1200	2350	2600	2450	-	-	-	CH+1700	1700
GW15	1500	0.5	1700	2000	1200	2600	2975	2550	-	-	-	CH+1700	1800
GW20	2000	0.5	1700	2500	1400	-	-	-	2600	3000	3000	CH+1700	2000
GW25	2500	0.5	2000	2500	1800	-	-	-	3250	3500	3300	4500	2000
GW30	3000	0.5	2000	3000	1800	-	-	-	3250	3500	3550	4500	2000
GW40	4000	0.5	2500	3000	1800	-	-	-	3750	4000	3750	4500	2000


Note:

- All dimensions include +/- 25mm tolerance per wall, thus the absolute minimum shaft width and depths are 50mm smaller and the absolute maximum shaft width and depth are 50mm larger.
- For side opening doors, same dimensions are applicable for both RH and LH doors.
- For WB region minimum headroom height and pit depth are higher

Control System Features

EBD A	Emergency Battery Drive, Automatic (ARD)	O	FCC R	False car call canceling (by pressing button again)	S(FS)
CEL E	Car emergency lighting	S	GOL	Acoustic device for arrival at landing	O
EAQ	Earthquake mode of operation	O	LAL	Lanterns at landing	O
FRD	Fireman's Drive	S	BLF	Bypass load function	S(FS)
COD	Correction drive to next level	S	OLF	Over load function, constant indication/ buzzer	S
ABE M	Alarm bell	S	CRB	Car call registered buzzer	O
ISE C	Emergency intercom car-machine room-control room	O	ACU	Lift Announcer (LAS)	O
DCB	Door close button	O	LIL AM	Lift link, Alarm, mode signals (BMS)	O
DOB	Door open button	S	LIL AMB	Lift link, Alarm, mode, position	O
DOE	Extended door open time	O	TTC	Through type car	O
SRC	Light curtain in car	S	OSS MC	Out of service switch -Remote	O
ACL B	Accurate releveling, automatic, both open and closed doors	O	PRC	Priority call with key switch in car	O
ACL C	Accurate releveling, automatic, closed doors	O	PRL	Priority call with key switch in landing	O
CCB	Car call backwards	S(FS)	ATS	Attendant service	O
OCL	Operation of car light, automatic	S(FS)	PAM	Parking at Main floor, doors closed	S
OCV	Operation of car ventilation, automatic	S(FS)			
OSS	Out of service switch at landing, doors closed, lights off	O			

S: Standard; S(FS)-Standard Field Selectable; O-option

 - Energy saving feature

KONE provides innovative and eco-efficient solutions for elevators, escalators, automatic building doors and the systems that integrate them with today's intelligent buildings.

We support our customers every step of the way; from design, manufacturing and installation to maintenance and modernization. KONE is a global leader in helping our customers manage the smooth flow of people and goods throughout their buildings.

Our commitment to customers is present in all KONE solutions. This makes us a reliable partner throughout the life cycle of the building. We challenge the conventional wisdom of the industry. We are fast, flexible, and we have a well-deserved reputation as a technology leader, with such innovations as KONE MonoSpace®, KONE EcoMod™ and KONE UltraRope®.

KONE employs on average 50,000 dedicated experts to serve you globally and locally.

KONE India, with a nation-wide network and about 4,000 employees, is committed to its customers for the entire life cycle of its each and every product.

KONE Elevator India Private Limited

Factory and Registered Office:

50, Vanagaram Road, Ayanambakkam
Chennai - 600 095. India
Tel. No. +91 44 6660 3900

Corporate Office:

Prestige Centre Court, 9th Floor, The Forum
Vijaya Mall, No. 183, NSK Salai, Arcot Road,
Vadapalani, Chennai – 600 026. India
Ph. +91 44 6625 4000

Toll Free Service Number:

1800 108 1234 / 1800 425 4254

Contact person:

Tel. No:

Visit us at www.KONE.in